

Electrolux

ELECTROLUX HOME PRODUCTS PTY LTD

ABN 51 004 762 341

Technical Publication N° CE750.docx

Issue: 1

Date: 2/15

WESTINGHOUSE

***ELECTRIC
UNDERBENCH OVENS***

MODEL

PNC

WVE613S

944031680

WVE613W

944031681

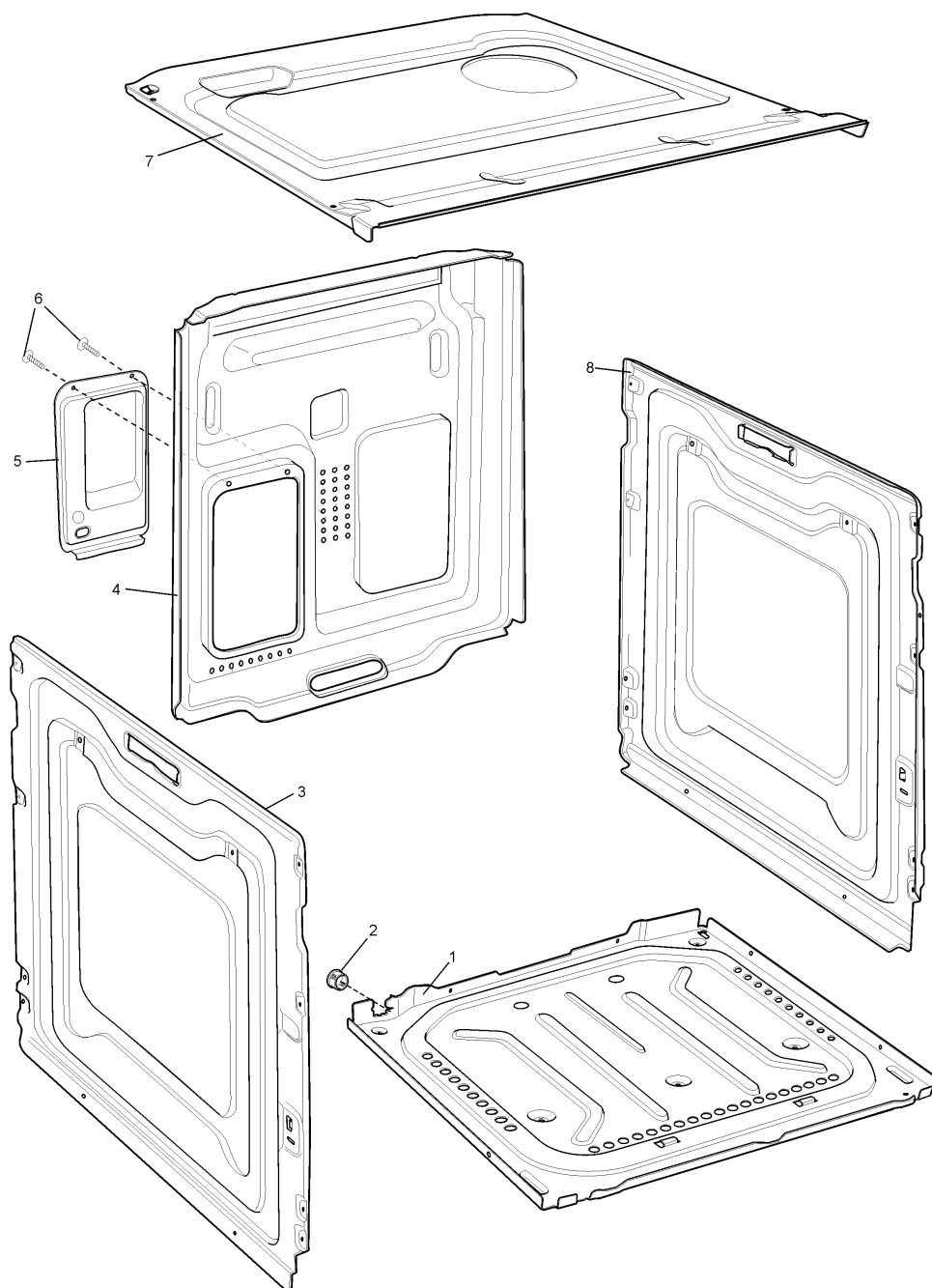
First Built Dates	
WVE613S	2/15
WVE613W	2/15

Contents

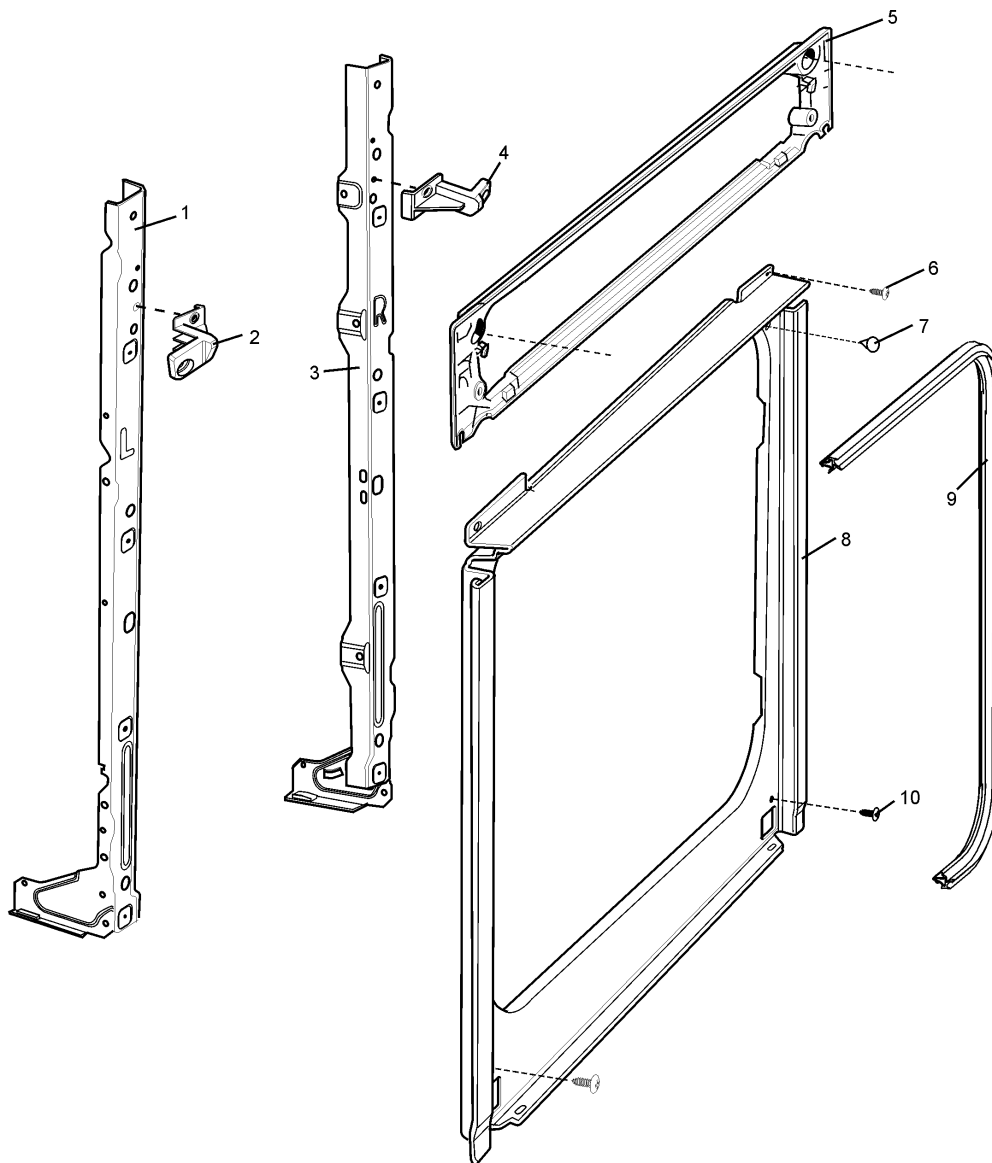
First Built Dates.....	2
CHASSIS ASSEMBLY	4
FRONT FRAME ASSEMBLY	5
OVEN ASSEMBLY	6
PANEL DECK ASSEMBLY	8
CONTROL PANEL ASSEMBLY	9
OVEN DOOR ASSEMBLY	10
INTERNAL PACK	11
CIRCUIT DIAGRAM.....	12

NOTE: In Parts Listings

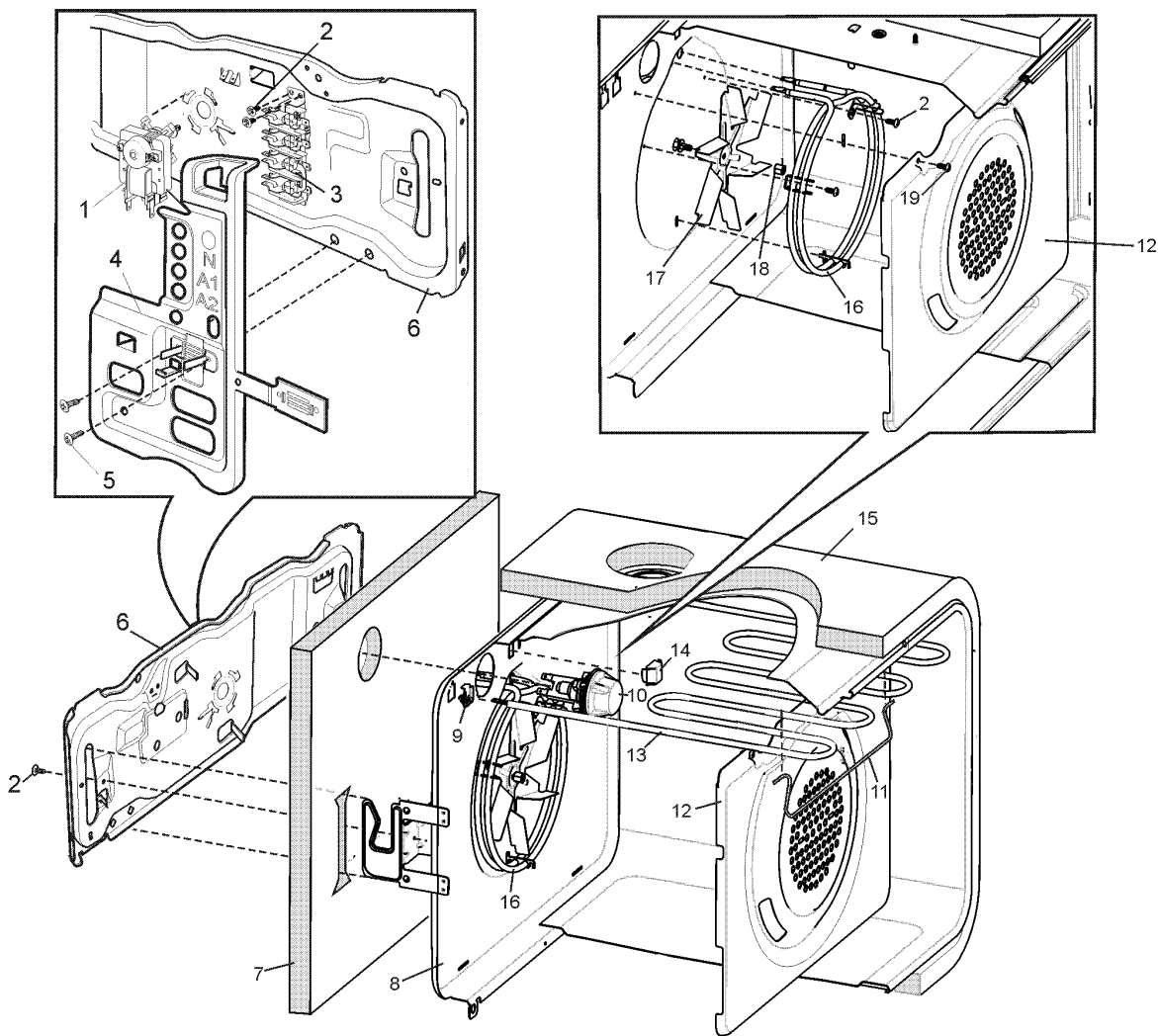
N.I.	=	Not Illustrated
N.P.A.	=	No Part Available
N.P.N.	=	Not Used on this Model

MODELS:**WVE613S****WVE613W****EX. VIEW DRAWING 7600
CHASSIS ASSEMBLY**

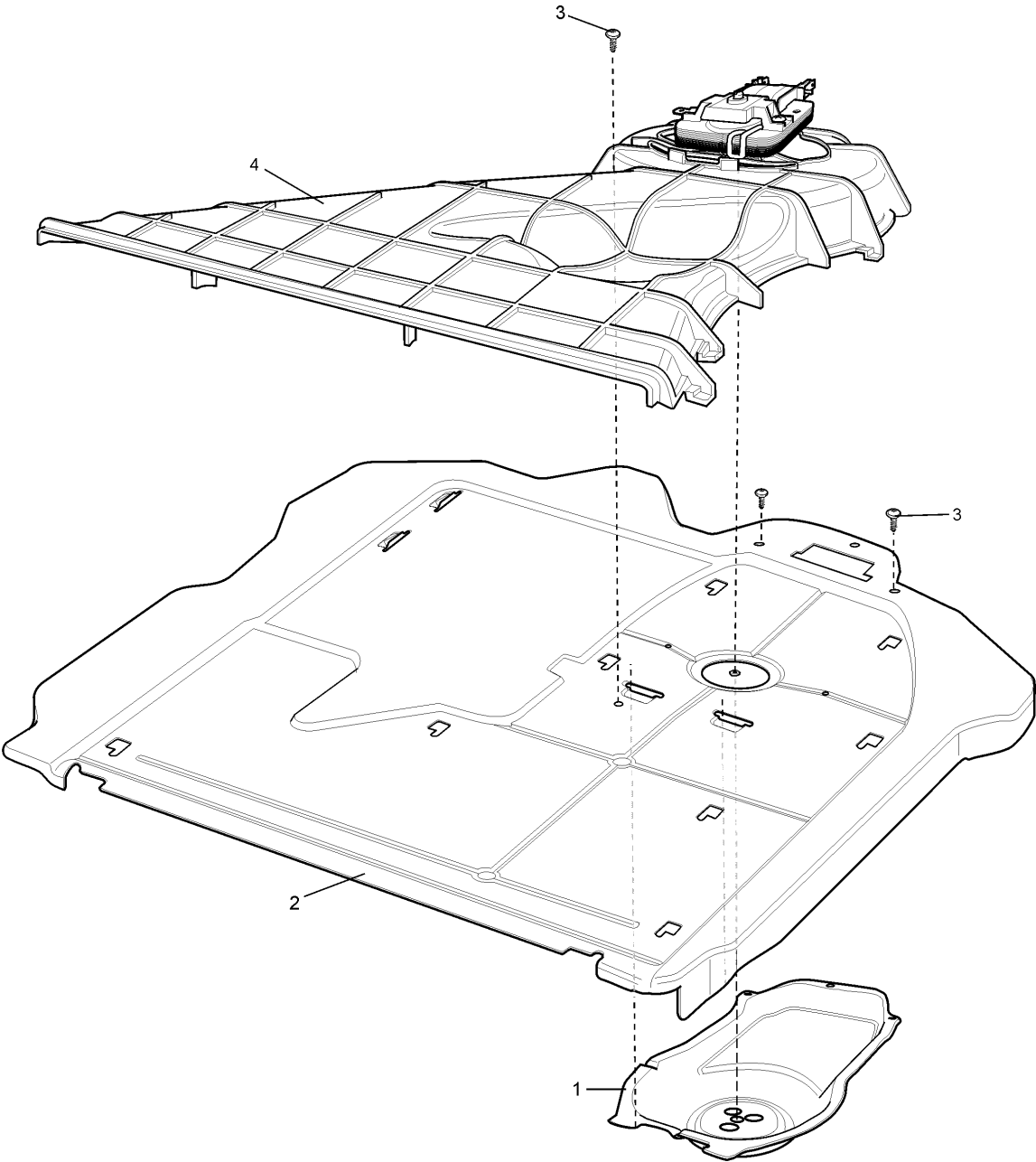
ITEM	PART N°	DESCRIPTION	Ex 7600	QTY
1	0038 003 291	PANEL BASE BIOS		1
2	0049 001 206	PLUG DOME MDP16		1
3	0038 006 866	PANEL SIDE UB L/H NGD		1
4	0038 008 117	PANEL COVER WIRE UB 36MM		1
5	0022 041 136	PLATE COVER TERM BLK ELEC BIOS		1
6	0701 009 033	SCREW #8 X 8MM HEX/MULTI		X
7	0038 005 658	PANEL TOP NGP		1
8	0038 006 865	PANEL SIDE UB R/H NGD		1

MODELS:**WVE613S****WVE613W****EX. VIEW DRAWING 8129
FRONT FRAME ASSEMBLY**

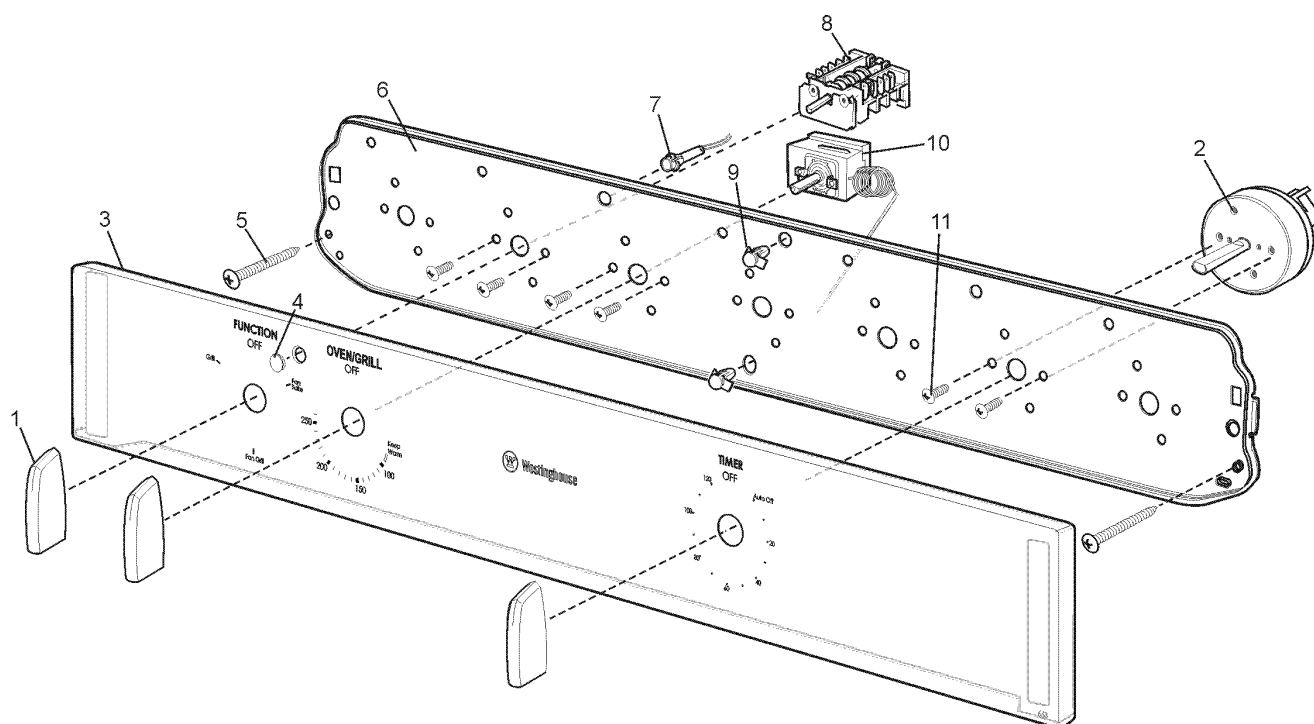
ITEM	PART N°	DESCRIPTION	Ex 8129	QTY
1	0048 004 839	CHANNEL FRONT NGP UB LH		1
2	0160 003 620	CAP MOUNT F/FRAME L/H NGD		1
3	0048 004 840	CHANNEL FRONT NGP UB RH		1
4	0160 003 619	CAP MOUNT F/FRAME R/H NGD		1
5	0545 002 901	TRIM SURROUND C/PANEL NGD		1
6	0701 009 027	SCREW #8 X 1/2 MUSH #2PH AB BK		X
7	0589 001 032	BUMPER STOP BLACK OC98		2
8	808221202	FRONT FRAME PAINTED ELE UB NGP		1
9	808511801	SEAL OVEN MODULAR PROFILE		1
10	0701 009 027	SCREW #8 X 1/2 MUSH #2PH AB BK		X



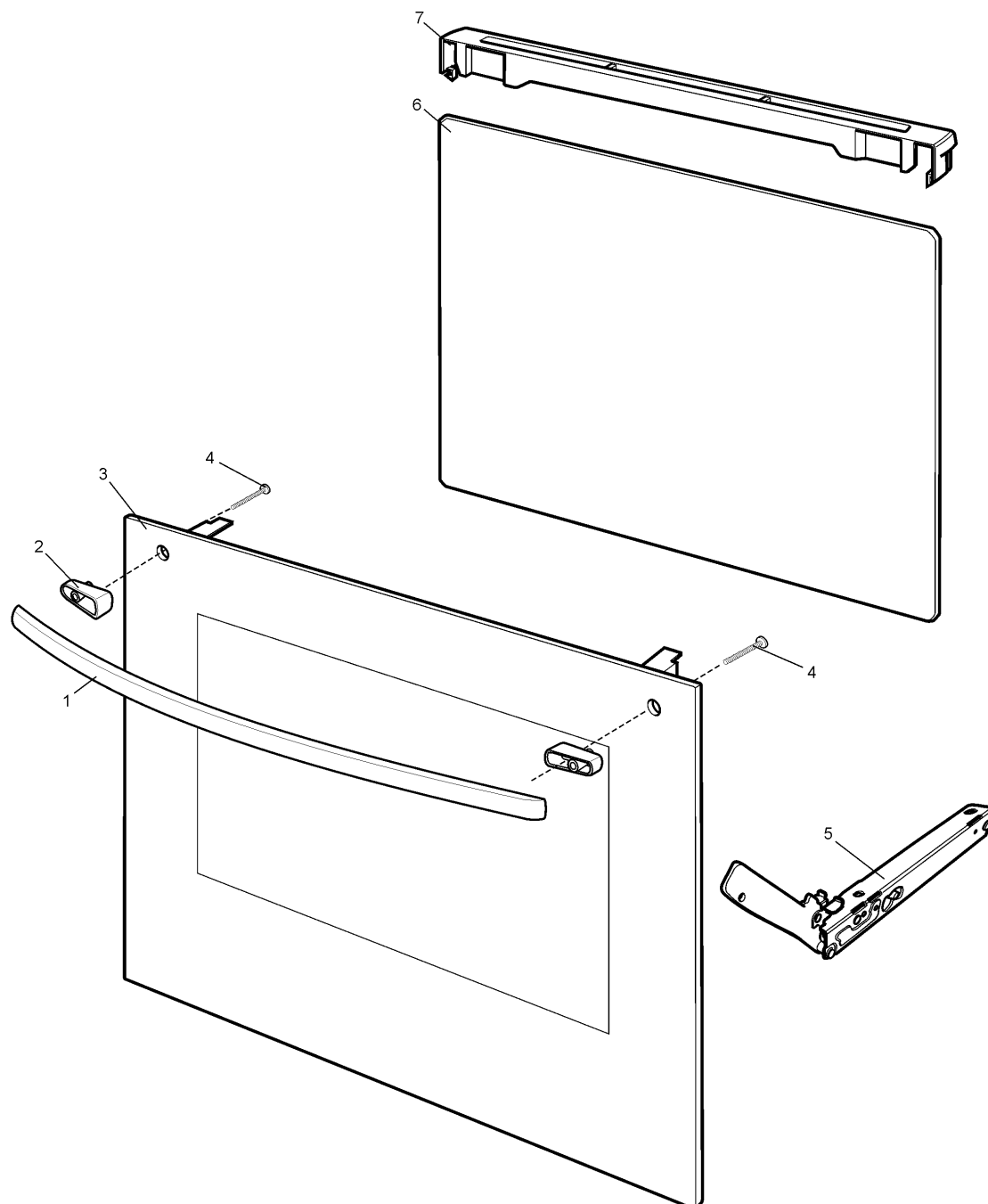
ITEM	PART N°	DESCRIPTION Ex 7734	QTY
1	0214 002 118	MOTOR FAN OVEN - BIOS	1
2	0701 009 033	SCREW #8 X 8MM HEX/MULTI	X
3	0003 012 590	BAR CONNECTOR W/EARTH BIOS	1
4	0349 001 376	SHIELD WIRING TERMINAL BIOS	1
5	0701 002 133	SCREW #6 3.5X28 HILO PAN PH	2
6	0489 001 146	BRACE OVEN REAR B/I BIOS	1
7	0374 005 260	INSULATION OVEN BACK - KNAUF	1
8	N.P.A.	OVEN ENAM ELEC FAN GIO NGD	1
9	0125 008 409	CLIP ELEMENT MOUNT	2
10	389 0793 24	HOLDER LAMP ASSY BIOS	1
	LM003	LAMP 25W SES E14 300C CLEAR (PT OF ITEM 10)	1
11	0012 018 695	SUPPORT ELEMENT GRILL BIOS	1
12	0038 016 777	PANEL FAN COVER ELEC ENAM BIOS	1
13	0122 004 538	ELEMENT GRILL 2200W S/S321	1
14	0125 008 371	CLIP THERMOSTAT BIOS	1
15	0374 005 259	INSULATION OVEN WRAP - KNAUF	1
16	0122 004 574	ELEMENT FAN RING EGO	1
17	0026 001 042	FAN IMPELLER OVEN BIOS	1
18	0065 009 265	NUT M6 L/H FAN MOTOR	1
19	0701 009 027	SCREW #8 X 1/2 MUSH #2PH AB BK	2
N.I.	0541 001 258	THERMAL CUTOUT 190 DEG N.C.	1



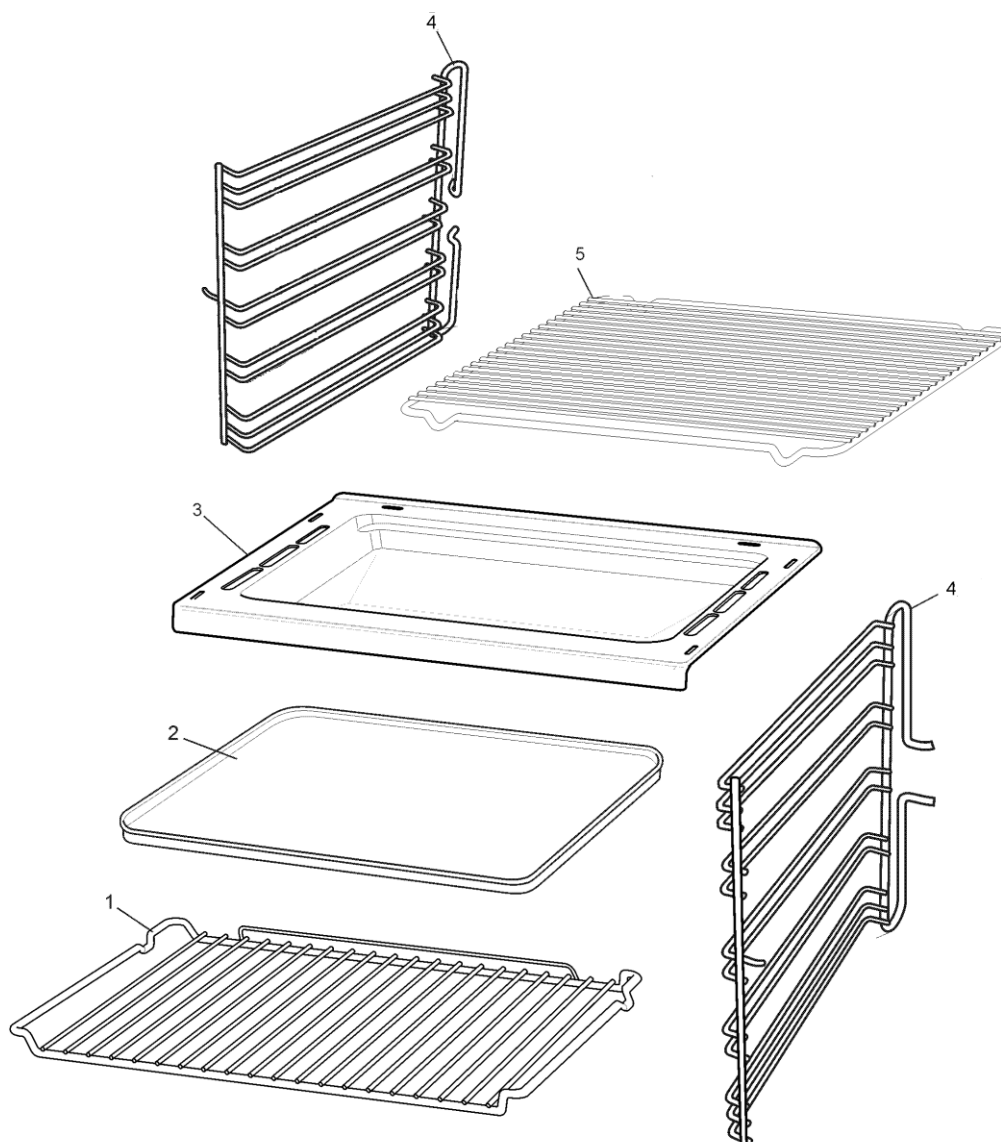
ITEM	PART N°	DESCRIPTION	Ex 7602	QTY
1	809138503	FLUE DUCT OVEN U/B ELEC NGD		1
2	0038 003 292	PANEL DECK INTER ELEC BIOS		1
3	0701 009 027	SCREW #8 X 1/2 MUSH #2PH AB BK		3
4	0257 001 041	CANOPY FAN ASSEMBLY U/B NGD		1
N.I.	0541 001 242	THERMAL CUTOUT 120 DEG N.C.		1



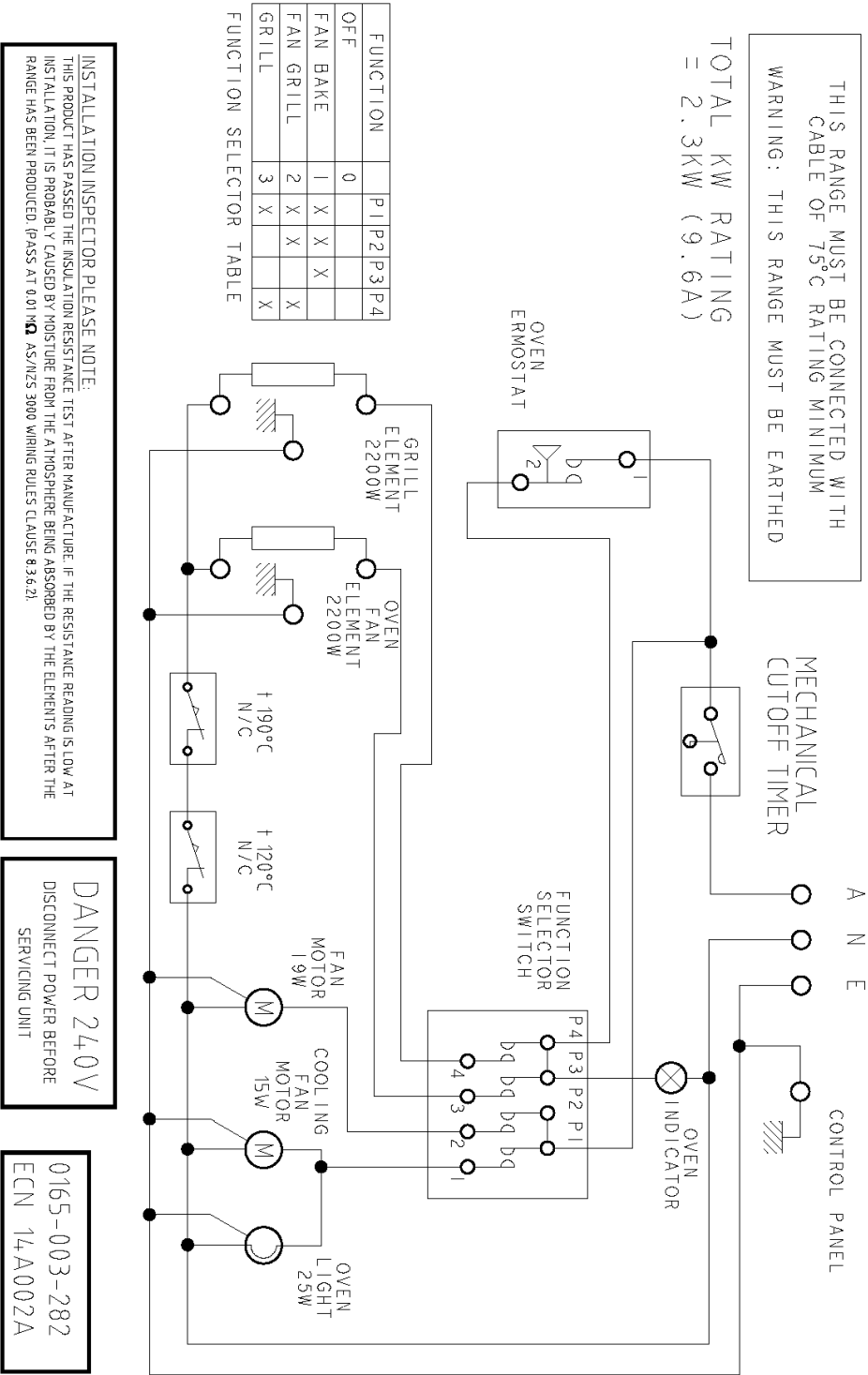
ITEM	PART N°	DESCRIPTION Ex 7736	S	W
1	0019 008 195	KNOB ASSY WH BLDE SILVER FORTE	2	2
2	0574 001 258	TIMER 2 HOUR CUT OFF NINGBO	1	1
3	A02261201	PNL CNT & CLIPS WVE613S FORTE	1	
	0255 004 153	GLASS & CLIPS WVE613W FORTE		1
4	A00499301	HOUSING LENS IND BIOS AMBER	1	
5	0701 009 040	SCREW #8 X 45 PAN QUADREX	2	2
6	0022 041 102	PLATE MTG SWITCH MULTI 7 BIOS	1	1
7	809104802	LIGHT IND AMB 600MM	1	1
8	0534 001 735	SWITCH MULTI 4 EL BIOS	1	1
9	0271 001 309	SPACER CONTROL PANEL BIOS	2	2
10	0541 001 931	THERMOSTAT OVEN - EGO	1	1
11	0150 005 259	SCREW M4 X 5 PAN #2PH SMALL HD	6	6
N.I.	0701 002 113	SCREW #6 X 9.5 PAN PHIL ZC	2	2

MODELS:**WVE613S****WVE613W****EX. VIEW DRAWING 8177
OVEN DOOR ASSEMBLY**

ITEM	PART N°	DESCRIPTION Ex 8177	S	W
1	0050 010 811	HANDLE DOOR WEST SILVER FORTE	1	1
2	0160 003 656	STAND-OFF NON-PYRO WEST FORTE	2	2
3	0038 002 918	PNL OV DR OUT ASS S/S FORTE	1	
	0038 002 919	PAN OV DR OUT ASS WHT FORTE		1
4	809058301	SCREW M4 X 25 PAN MTS PHIL BLK	2	2
5	387 0770 01	HINGE 2-L OVEN DOOR NGD	2	2
6	0255 004 178	GLASS OV DR IN WEST FORTE	1	1
7	0545 002 748	TRIM DOOR TOP VENT NGD	1	1
N.I.	0150 005 271	SCREW M4X5 HEX1/4" PH2 BLK ZP	4	4

MODELS:**WVE613S****WVE613W****EX. VIEW DRAWING 7738b
INTERNAL PACK**

ITEM	PART N°	DESCRIPTION Ex 7738b	QTY
1	*0327 001 320	RACK SHELF OVEN WESTINGHOUSE	2
2	0037 004 047	TRAY BAKING FULLWIDTH TINPLATE	1
3	0036 001 103	DISH GRILL ENAM F/WIDTH BIOS	1
4	*0327 001 319	RACK SIDE SUPPORT OVEN EVOLVE	2
5	*0327 001 200	RACK INSERT GRILL DISH BIOS	1
N.I.	0701 003 073	SCREW #8 X 5/8 CSK (INSTALL)	2
N.I.	0701 003 080	SCREW #8-10X35 PAN PH2 P/B BK	2
N.I.	0701 002 133	SCREW #8 4.2 X 28 HILO PAN PH	2
N.I.	0712 015 030	BUSH MOUNT F/FRAME NGD	2
PART OF * RACK PACK 0327 001 327			



WARNING

IT IS ILLEGAL FOR PERSONS OTHER THAN LICENSED ELECTRICAL MECHANICS OR PERSONS
AUTHORISED BY LEGISLATION TO WORK ON THE FIXED WIRING OF ANY ELECTRICAL
INSTALLATION. PENALTIES FOR CONVICTION ARE SEVERE.

IMPORTANT SAFETY NOTICE

This diagram has been prepared for use by electrically qualified service technicians. Electrolux
cannot be held responsible for the interpretation of its service publications nor for any injury or
damage that may occur in connection with their use.